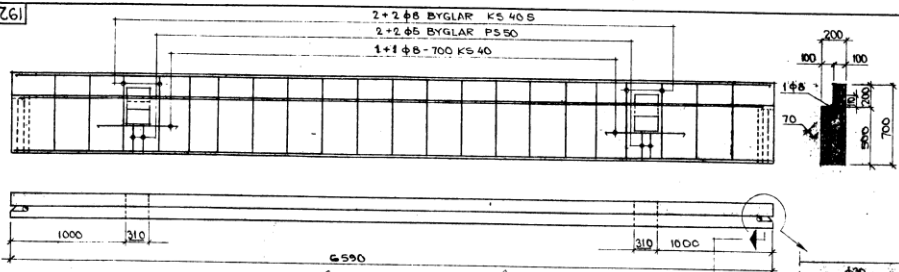
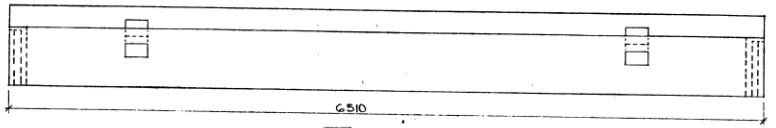


511X:7Z6]

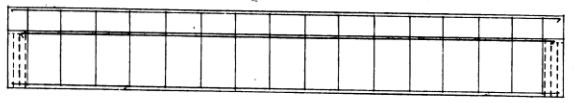
592149



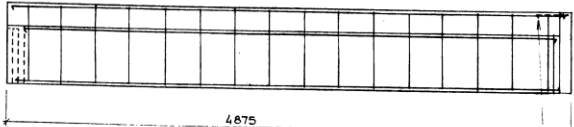
BALK 1 1:20
 ARMEERING: 2+12-6500 1ÖK KS 40 + 2+φ8-700 ENL VY + 1φ8-6400 1ÖK KS 40
 BYGLAR: 2+16-6550 + 1+10-6100 1 UK KS 50
 17+5 c 300 P 550 + 4+φ8 KS 40 S (ENL OVAN)



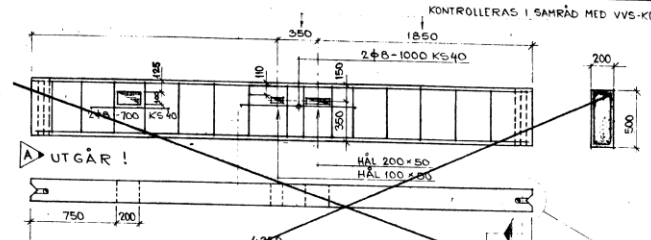
BALK 2 1:20
 ARMEERING: 2+12-6400 1ÖK KS 40 + 2+φ8-700 + 1φ8-6400 1ÖK KS 40
 2+16-6450 + 1+10-6100 KS 60 1 UK
 BYGLAR: 14+5 c 300 P 550 + 4+φ8 KS 40 S
 LÖVRIGT LIKA BALK 1



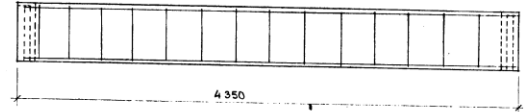
BALK 3a 1:20
 ARMEERING: 2+10-4600 1ÖK KS 40 + 1φ8-4600 1ÖK KS 40
 2+12-4700 1 UK
 BYGLAR: 16+5 c 300 P 550



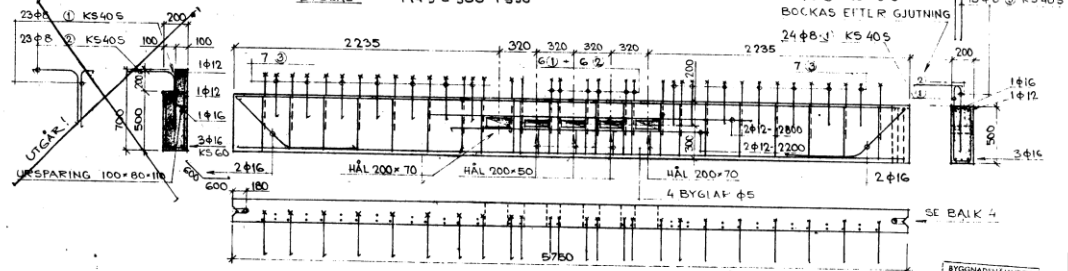
BALK 3b 1:20 **BALK 3bS** (SPEGELVÄND)
 ARMEERING: 2+10-4600 1ÖK KS 40 + 1φ8-4600 1ÖK KS 40
 2+12-4700 1 UK
 BYGLAR: 16+5 c 300 P 550
 LÖVRIGT LIKA BALK 3a



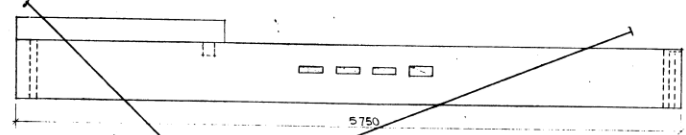
BALK 4 1:20 **BALK 4S** (SPEGELVÄND)
 ARMEERING: 2+10-4200 1ÖK KS 40
 BYGLAR: 2+12-4250 + 1+12-4200 1 UK KS 60
 15+5 c 300 P 550



BALK 5 1:20
 ARMEERING: 2+10-4200 1ÖK KS 40
 2+12-4250 + 1+12-4200 KS 60 1 UK
 BYGLAR: 14+5 c 300 P 550

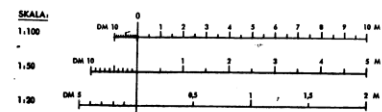


BALK 6a 1:20
 ARMEERING: 1φ12-1700 + 1φ12-1550 + 1φ12-4000 + 1φ16-5600 1ÖK KS 40
 2φ16-5700 + 1φ16-5400 1 UK KS 60
 BYGL: 23φ8 c 300 KS 40 S



BALK 6b 1:20 **BALK 6bS**
 LÖVRIGT LIKA BALK 6a

STÅLKVALITET: ALLMÄNNA ANVISNINGAR FÖR FABRIKS-TILLVERKADE BETONGELEMENT SE RITN 1924: K101
 BETONGKVALITET:



BYGGNADSHÄRANDE
 VÄSTERÅS
 16. 06. 71
 0.1526/71
 -5 AUG 1971

REV.	AVS.	ANM.	INR.
04	15	ARMERING	7
INGENJÖRSBYRÅN MÖLLER & OLSSON AB SÖDERSTRÅKET 3, 722 42 Västerås Tel. väst 08113730 RÖNNEY VÄSTERÅS KY VIKTKASTÄREN 2-11.13-49 BALKAR 1-6 Skala 1:20, 1:5 Utskrift: AKLEBY Utgåva: A-20 1924: K115			